

There are various feedback titles available for the CIS, and more are always in the works.

Every CIS title provides multiple feedback interfaces. The titles usually contain permutations of each interface in order to support protocols with varying numbers of physiological variables (i.e. frequency bands). Additional free interfaces are added to the titles over time!

CIS titles available for BrainMaster Technologies:

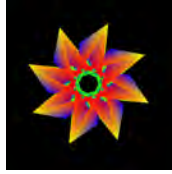


CIS Pack – a collection of generic interfaces. Includes interfaces for playing movies and displaying pictures. Provides the greatest variety of feedback interfaces.

Cubes – A tried and true feedback paradigm. Includes interfaces with varying color schemes.

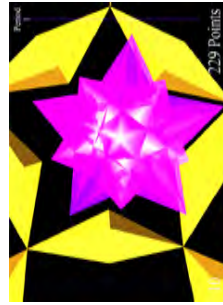


INTOIT – Succeed by getting objects in the scene to come as close as possible.



Kaleidoscope – Kaleidoscopic effects for feedback. Great for use with CD audio feedback.

SoundScape – Spatial environments and instrumental songs covering a broad range of tastes. These interfaces are based solely on auditory feedback.



StarLight – Control the flight of a crystal-line star.

TO ORDER YOUR COPY OF THE CYBERNETIC INTERFACE SYSTEM CONTACT:

BrainMaster Technologies

24490 Broadway Avenue

Oakwood Village, OH 44146

(440) 232-6000

www.brainmaster.com

sales@brainmaster.com

System Requirements:

Operating System:

Windows98/ME, Windows2000, WindowsXP (WindowsXP recommended)

Biofeedback System:

BrainMaster 2.0 SE

CPU:

AMD - Duron, Athlon
Intel - PentiumII, PentiumIII, PentiumIV (recommended - Athlon, PentiumIII or faster)

Motherboard:

Must support AGP 2.0 or newer

Graphics Card:

Any graphics card that supports hardware-accelerated 3D graphics.
(recommended - nVidia GeForce4 MX, ATI Radeon 7500, or faster)

Sound Card:

Any sound card/chip.
(recommended - nVidia APU, Creative Labs SoundBlaster Live or newer)

RAM:

128 MB

(recommended - 512MB for WindowsXP itself)

Hard Drive Space:

300 MB free space



CYBERNETIC INTERFACE SYSTEM™

for the
BrainMaster



Interface to Your Inner Space™

Cybernetic Interface System™ — Interface to Your Inner Space™

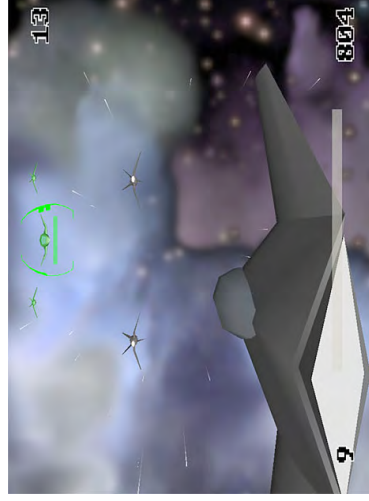
The **Cybernetic Interface System™ (CIS)** is a virtual reality engine for biofeedback systems. It provides numerous games and display screens, called “feedback interfaces” that are used to convey positive and negative reinforcement information for up to 100 simultaneously incoming streams of physiological data.



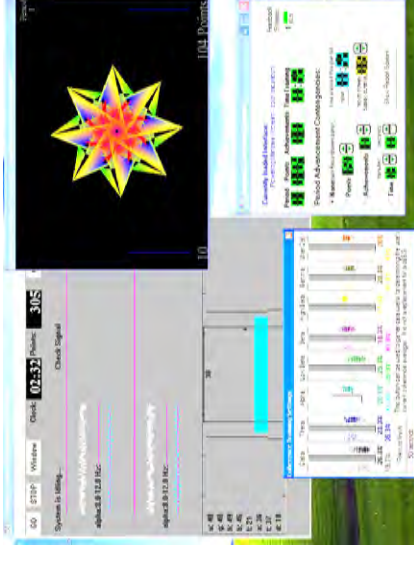
Content used in CIS feedback interfaces can be created with just about any commercial 3D modeling application. This enables 3D artists and developers to continue using their favorite tools when creating content for the CIS.

The CIS supports numerous graphic, audio, and movie formats, including Flash and Shockwave. Keyboard, mouse, and joystick input is also supported. Head-mounted displays and LCD shutter glasses are supported for stereographic display, making imagery literally appear to come “out” of the screen, while providing a view “into” the monitor that appears to extend into the distance beyond the back of the monitor itself! Support for tactile devices is coming soon, and any joystick with “force feedback” capabilities will work with the CIS’s tactile feedback when that feature becomes available.

- A highly-reliable feedback solution. If one CIS title runs on your computer without problems, they should all run (performance will vary based on the feedback content and hardware used).
- Feedback interfaces designed and reviewed by developers who understand biofeedback, neurofeedback, operant conditioning, and qEEG.
- Feedback interfaces specifically targeted to various types of users, as well as a number of generic feedback interfaces.
- Built-in context-sensitive help for the feedback interfaces. Simple access to interface descriptions makes it easy to understand how a feedback interface works, without having to contact tech support.
- Simultaneously conveys feedback information for multiple frequency bands.
- Dramatically improved coherence training.
- Selectable training contingencies: Points, Achievements, or Time
- Full-screen and windowed display modes
- Real-time performance indicator and warnings
- Excellent CD audio feedback capabilities.
- Free trials for every CIS title released. You can now be sure you are going to be happy with your investment.



BrainMaster 2.0SE and the CIS provide unparalleled neurofeedback possibilities.



The CIS is an optional add-on for BrainMaster 2.0SE. It is **NOT** a separate program requiring you to learn a whole new way of providing training. Instead, it works in **CONJUNCTION** with the BrainMaster software.

Training runs (also known as “periods”) now can be defined by the number of points or achievements to be earned, as well as time-based criteria.

Training now can be done with individual sounds for each feedback variable (great for alpha-theta training).

Coherence training on the BrainMaster is taken to a whole new level - unmatched by anything in the field. Training criteria are much easier for the clinician to set up. Upper AND lower threshold limits are used to target a specific goal and range, making it possible to train coherence without inadvertently rewarding hyper or hypo coherence. Multiple frequency bands can be trained simultaneously while using different threshold criteria for each individual band. Coherence training works with all the CIS titles, making it much easier for the client to understand the feedback.